

QUOTE / ORDER FORM

Bear Equipment Inc. will manufacture sheaves to your specifications.

Please complete this form so that we may provide a quote for your sheave needs.



COMPANY

ADDRESS

CONTACT NAME

EMAIL

REFERENCE No.

PHONE

CELL

FAX

QUANTITY

SHEAVES

MATERIAL

- ☐ STEEL
- ☐ ALUMINUM
- ☐ NYLON
- ☐ OTHER
- ☐ STAINLESS STEEL

OPTIONS

- ☐ GROOVE FLAME HARDENED
- ☐ GREASE FITTING IN HUB
- ☐ KEYWAY AND SET SCREW
- ☐ PLATING

DIMENSIONAL MEASUREMENTS

- ☐ IN INCHES
- ☐ MM MILLIMETRES

OUTSIDE DIAMETER

A

RIM WIDTH

C

SHAFT SIZE

E

HUB DIAMETER

G

FINISHED BORE

B

HUB WIDTH

D

GROOVE DIAMETER

F

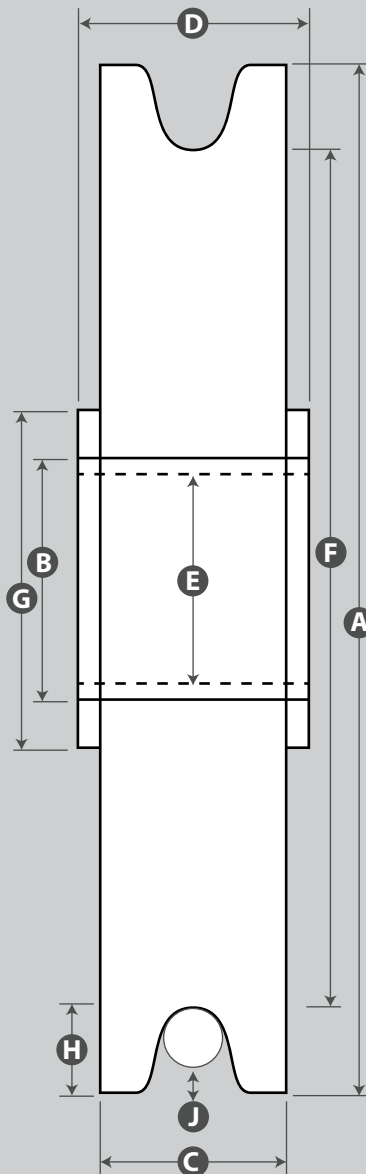
ROPE DIAMETER

J

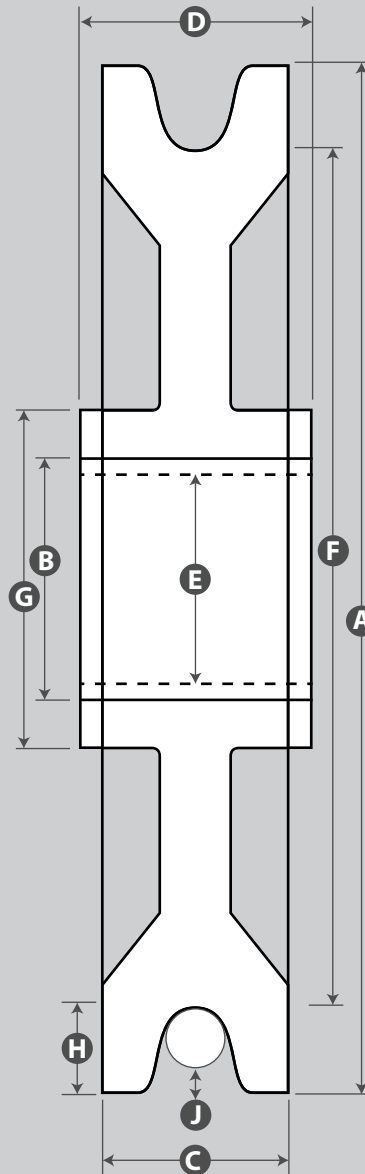
GROOVE DEPTH

H

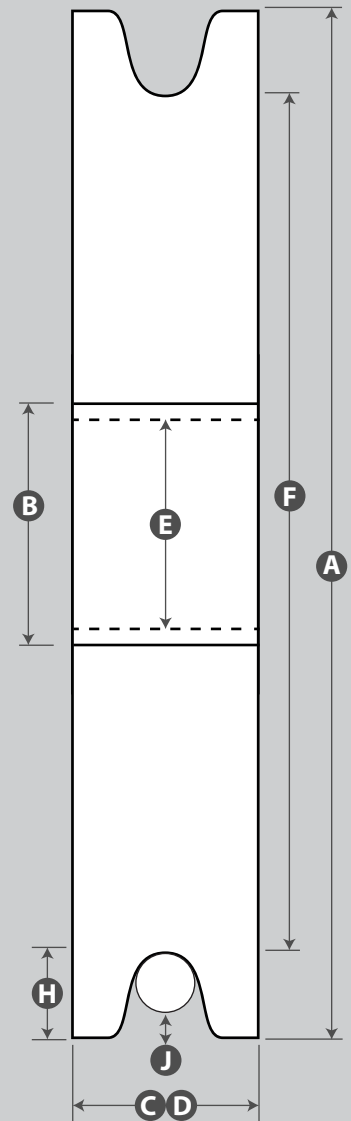
TYPE 1:
NON WEB HUB STYLE



TYPE 2:
WEB / HUB STYLE



TYPE 3:
FLAT-SIDED / NO HUB



BUSHINGS

TYPE 1:

SELF LUBRICATING BRONZE



TYPE 2:

SAE660 GREASEABLE BRONZE
WITH FIGURE 8 GREASE GROOVE



BEARINGS

TYPE A:

HEAVY DUTY NEEDLE
ROLLER BEARING



TYPE B:

HEAVY DUTY NEEDLE ROLLER
BEARING WITH HARDENED INNER RACE



TYPE C:

HEAVY DUTY NEEDLE ROLLER
BEARING WITH SEALS



TYPE D:

BALL BEARING WITH OR
WITHOUT SEALS



TYPE E:

"TIMKEN" TAPERED ROLLER
BEARING AND DOUBLE CUP
SERIES FOR SHEAVES. EXTENDED
CONE RIBS GROUND FOR SEALS



NOTES: